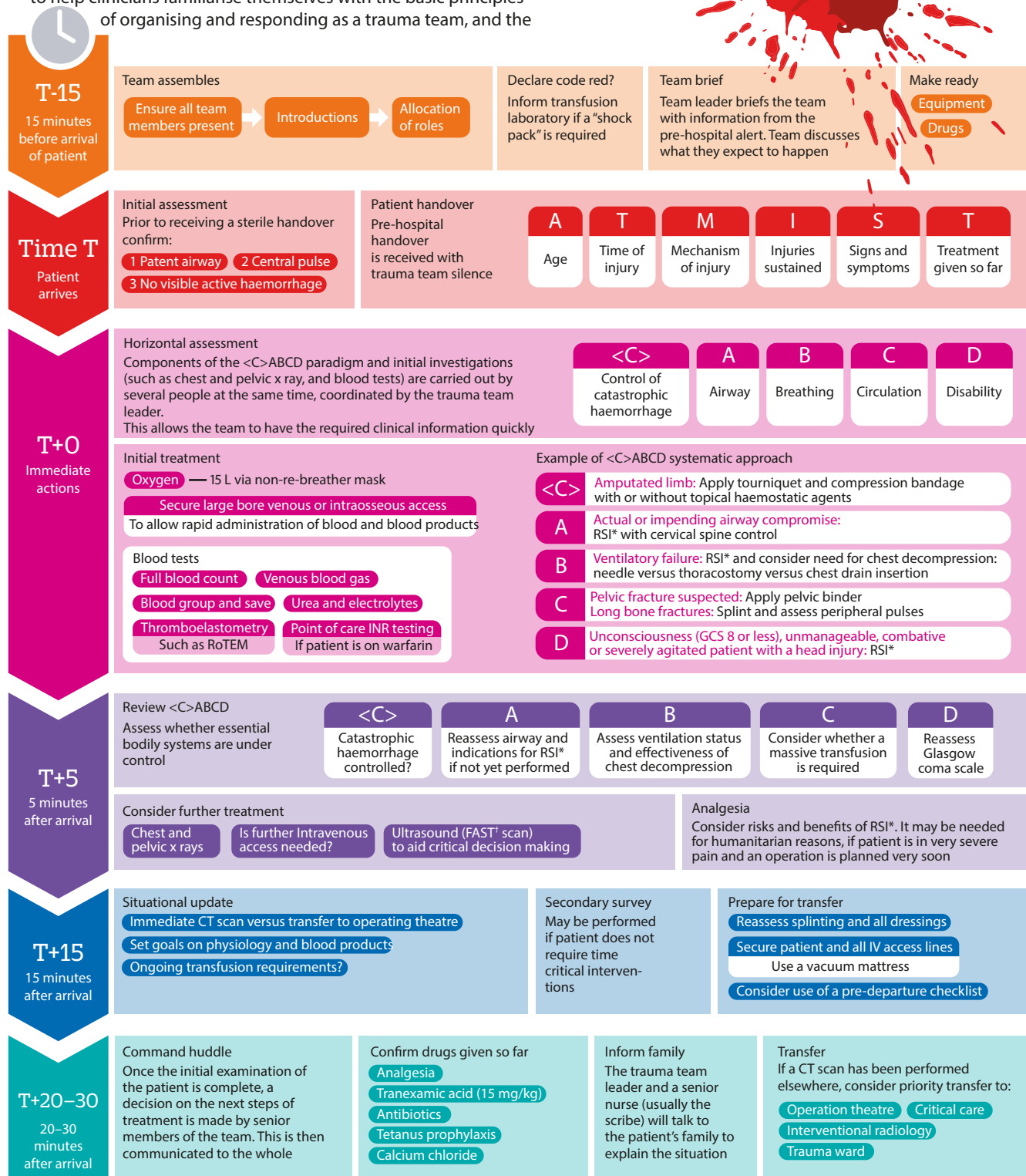




This suggested trauma team timeline is based on a combination of guidance from expert opinion and experience of UK emergency departments. It aims

to help clinicians familiarise themselves with the basic principles of organising and responding as a trauma team, and the



* RSI = Rapid sequence induction of anaesthesia

† FAST = Focused Assessment with Sonography for Trauma

Disclaimer: This infographic is not a validated clinical decision aid. This information is provided without any representations, conditions, or warranties that it is accurate or up to date. BMJ and its licensors assume no responsibility for any aspect of treatment administered with the aid of this information. Any reliance placed on this information is strictly at the user's own risk. For the full disclaimer wording see BMJ's terms and conditions: <http://www.bmj.com/company/legal-information/>